

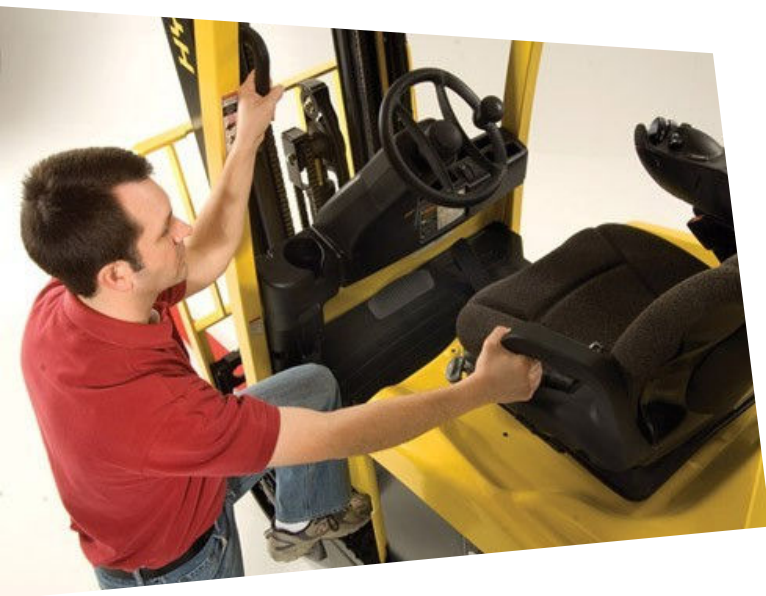
TLILIC2001A License to operate a forklift truck

Forklift Truck Licensing

Who is this course for?

The TLILIC2001A Licence to operate a forklift truck is intended for people who want to gain the skills and knowledge required to operate a forklift without supervision.

This course is a legal requirement for any person who operates a powered industrial truck equipped with a mast and an elevating load carriage to which is attached a pair of fork arms or other attachment, for licensing purposes.



Licensing, Legislative, Regulatory Considerations

Participants must be over 18 years of age, be able to speak and understand English; understand technical concepts and provide adequate 100 points of identification as per WorkCover NSW requirements.

The National Standard requires all high risk work licence training and assessment to be conducted under the supervision of an RTO, with the licence assessment component conducted by a WorkCover NSW accredited assessor.

A successful Formative Assessment must take place before the WorkCover Summative Assessment can be done.

If a Formative Assessment is unsuccessful more training will be required to progress through to the Summative Assessment.

About the course

The course requires the operator to be able plan work, conduct routine checks on a forklift, shift loads in a safe manner, and shut down and secure the equipment after the completion of operations.

This course is based on the National Standard for Licensing Persons Performing High Risk Work.

On successful completion participants can receive the required documentation to allow them to apply for a National Licence to Perform High Risk Work - Class LF from WorkCover New South Wales.

After completion of a course participants will also receive a Nationally Recognised Statement of Attainment.

How will the course be carried out?

Day 1 (8 hours duration)

1. Classroom sessions for the knowledge, covering;
 - Legal requirements
 - The operational characteristics of forklift trucks
 - Safety rules and precautions
2. A sample written knowledge assessment

Day 2 (8 hours duration)

3. Continued classroom sessions for the knowledge, covering;
 - Legal requirements
 - The operational characteristics of forklift trucks
 - Safety rules and precautions
4. Practical training (minimum four hours) including:
 - Pre-operational checks
 - Drive a forklift truck
 - Operate a forklift to handle loads
 - Monitor site conditions

Day 3

5. A written knowledge assessment (up to 1.5 hours)
6. A calculations test
7. Practical assessment (up to 1 hour per person)

Location and Equipment Requirements

Classroom Sessions and Written Knowledge Assessment

Adequate classroom facility must be provided for the classroom sessions as well as the written knowledge assessment.

Practical Assessment

The practical assessment can be conducted at any location that adequately facilitates proper assessment of the elements below:

- a) pre-operational checks
- b) planning the work
- c) checking controls on equipment
- d) shifting and stacking load
- e) loading and unloading
- f) shutting down equipment
- g) securing the site

The following equipment and materials must be available during assessment:

1. A forklift truck in safe operating conditions which complies with the requirements of NSW legislation.
2. Low, medium or high level racks or stacks.
3. A suitable load (either approximately 50% of the forklift's maximum capacity where practical, or a suitable physical dimension e.g. 1 cubic metre to simulate a normal load).

Booking and Payment Options

A list of names and the location of the course MUST be provided at least 72 hours prior to the course commencing.

A deposit of **\$245** per person is payable at the time of booking.

- Send cheque or money order prior to training program/course commencement; or
- Pay by cash, cheque or money order on the day you attend the course (by agreement only)

Cheques or money orders must be made payable to RAISE Training.

Contact (02) 9896 7587 to arrange purchase order/tax invoice.

Cancellation and Refunds

If course is cancelled within the last 3 business days prior to course start date a \$245 per person cancellation fee is incurred. If the course is to be rescheduled within the last 3 business days prior to course start date a \$150 per head reschedule fee is incurred.

Any client applying for a refund must do so in writing to the General Manager of Training Services 4 You stating the reasons for requesting a refund.

Course Costs

The total cost for the course for a **\$495** per person.

WorkCover charge a \$65 administration fee for processing the licence.

This is due within 60 days of passing the licence test

If WorkCover Re-Assessment is required an administration fee of \$245 will be charged.

Course Accreditation

RAISE Training is a Nationally Recognised Training Provider, accredited by the Australian Skills Quality Authority (ASQA).

Provider Number 91655

The Statements of Attainment issued by RAISE Training are accredited under the AQF (Australian Qualifications Framework) and recognised nationally by industry and other training providers.



Would you like further information?

Course Bookings

Upcoming course information and bookings:

Contact: **(02) 9896 7587**

Industry Specific Enquiries

No obligation advice and follow up service:

Contact: **Graham Jamieson 0410 541 259**

Email: **info@raisetraining.com.au**